

ORDINANCE #19-761

AN ORDINANCE OF THE CITY OF FRIEND, NEBRASKA, CLARIFYING ORDINANCE #19-756 TO ANNEX TERRITORY COMPRISING CONTIGUOUS AND ADJACENT LANDS, LOTS, STREETS, AND HIGHWAYS WHICH ARE URBAN OR SUBURBAN IN CHARACTER IN SUCH DIRECTIONS AS IS DEEMED PROPER TO THE CORPORATE LIMITS OF THE CITY, THE EXACT BOUNDARIES OF WHICH ARE DISPLAYED AND DESCRIBED IN ATTACHMENT A; TO PROVIDE FOR AN EFFECTIVE DATE OF SUCH ANNEXATION.

BE IT ORDAINED BY THE MAYOR AND CITY COUNCIL OF THE CITY OF FRIEND, NEBRASKA:

Section 1. On or about October 1, 2019 the City Council adopted Ordinance #19-756 which annexed certain properties and declined to annex certain other properties. The language of Ordinance #19-756 created confusion as to the exact properties to be annexed.

Section 2. In order to clarify the exact properties annexed by the City, this clarifying ordinance is hereby adopted.

Section 3. After complying with all procedures required by Nebraska Revised Statute § 17-405.01 and a majority of the members of the City Council having voted in favor of such annexation, the City Council hereby declares the annexation of the territory described in "Exhibit A" to be annexed to the corporate limits of the City of Friend, Nebraska, the limits of which are extended accordingly.

Section 2. This ordinance shall take full force and effect beginning on, and continuing thereafter, the date of its passage, approval, and publication or posting as required by law.

PASSED AND ADOPTED this 5th day of November, 2019.



Judith Kroke
Mayor

ATTEST:

Kimberly Son
City Clerk

Attach: Exhibit A

ATTACHMENT A – LEGAL DESCRIPTION OF PROPERTIES TO BE ANNEXED

THE FOLLOWING IS A LEGAL DESCRIPTION OF THE TERRITORY ANNEXED IN ACCORDANCE WITH ORINANCE #19-761, ADOPTED AND PASSED BY THE CITY COUNCIL FOR THE CITY OF FRIEND, NEBRASKA ON November 5, 2019.

PARCEL 1 (760060487) – Beckler Living Trust

Address: 560 West 3rd Street, Friend, NE, 68359

Description: FRIEND PRCT PT NE 1/4 SEC 22-8-1 1.29 ACRES

Location: The majority of the eastern boundary of the property is adjacent to the City's upper western boundary.

PARCEL 1A (760147583) – Friend Development Group, Inc.

Description: FRIEND PRCT PT NE 1/4 SEC. 22-8-1 11.17 ACRES

Location: The majority of the eastern boundary of the property is adjacent to the City's existing western boundary.



NEBRASKA

FRIEND

FRIEND ONE YEAR AND SIX YEAR STREET PLAN

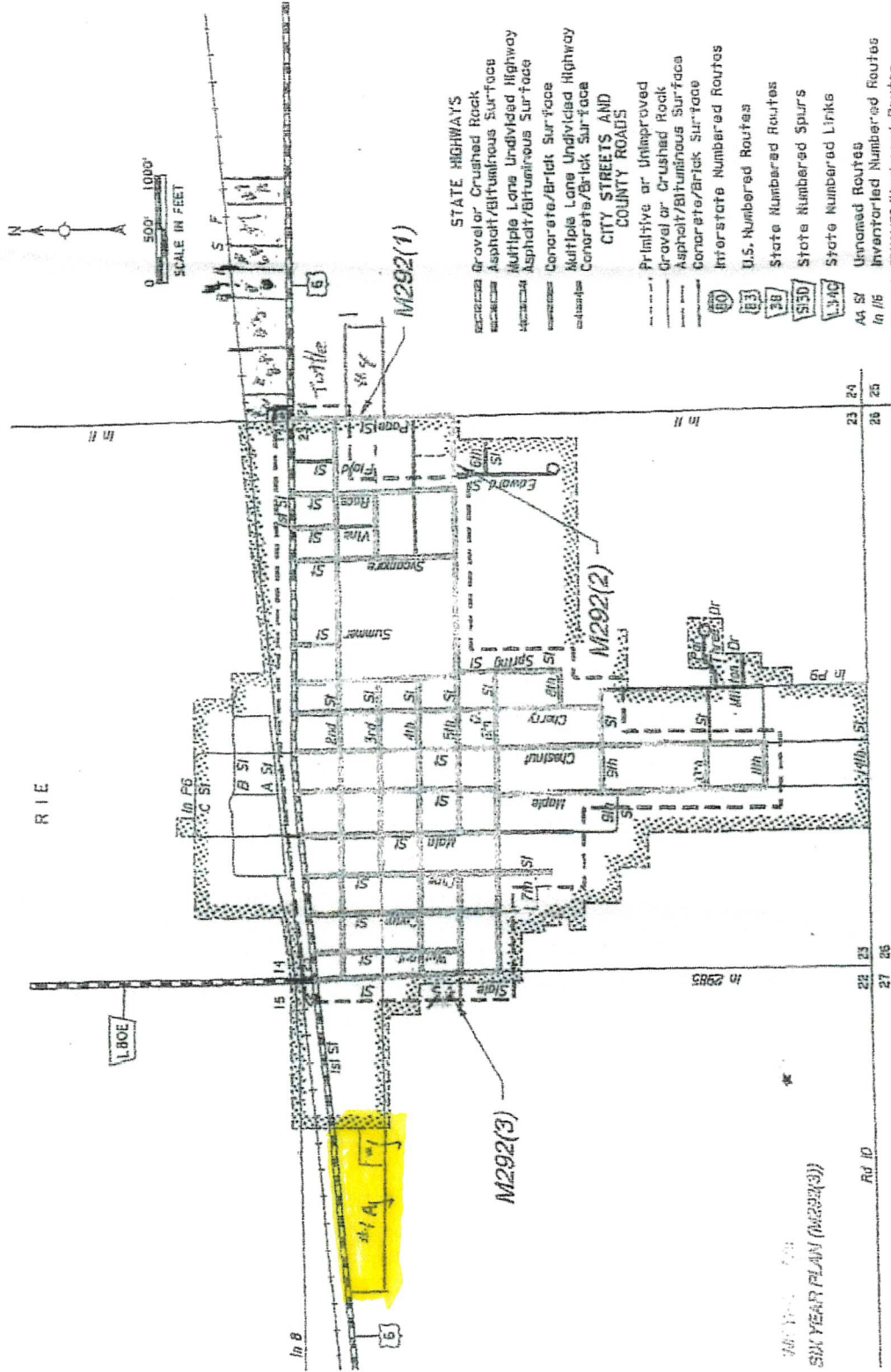
SHEET 1

1

FRIEND - 76

FRIEND
SALINE COUNTY
NEBRASKA
POPULATION 1174 (2000 CENSUS)
2011

R I E



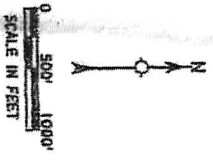
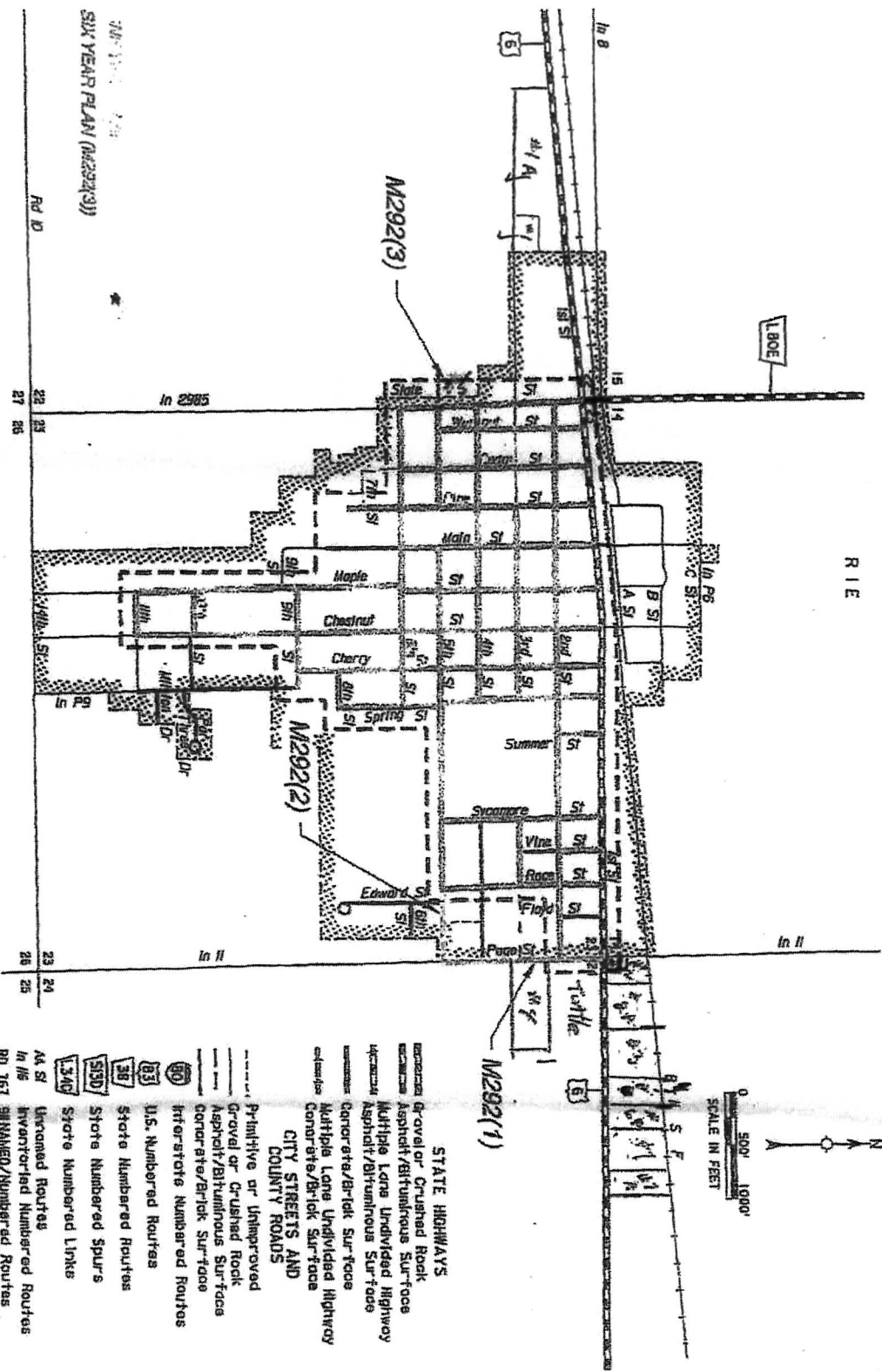
- STATE HIGHWAYS**
- Gravel or Crushed Rock
 - Asphalt/Bituminous Surface
 - Multiple Lane Undivided Highway
 - Asphalt/Bituminous Surface
 - Concrete/Brick Surface
 - Multiple Lane Undivided Highway
 - Concrete/Brick Surface
- CITY STREETS AND COUNTY ROADS**
- Primitive or Unimproved
 - Gravel or Crushed Rock
 - Asphalt/Bituminous Surface
 - Concrete/Brick Surface
 - Interstate Numbered Routes
 - U.S. Numbered Routes
 - State Numbered Routes
 - State Numbered Spurs
 - State Numbered Links
 - Unnamed Routes
 - In /6 Invented/Numbered Routes
 - RD 167 B/NAMED/Numbered Routes
 - City Center
 - Corporate Limits

CORPORATE LIMITS AS OF 2006
STATE HIGHWAYS CORRECTED TO 2006

SIX YEAR PLAN (M292(3))

FRIEND
 SALINE COUNTY
 NEBRASKA
 POPULATION 1174 (2000 CENSUS)
2011

R I E



- STATE HIGHWAYS**
- Gravel or Crushed Rock
 - Asphalt/Bituminous Surface
 - Multiple Lane Undivided Highway
 - Asphalt/Bituminous Surface
 - Concrete/Brick Surface
 - Multiple Lane Undivided Highway
 - Concrete/Brick Surface
- CITY STREETS AND COUNTY ROADS**
- Primitive or Unimproved
 - Gravel or Crushed Rock
 - Asphalt/Bituminous Surface
 - Concrete/Brick Surface
 - Interstate Numbered Routes
 - U.S. Numbered Routes
 - State Numbered Routes
 - State Numbered Spurs
 - State Numbered Links
 - Unimproved Routes
 - In NE Inverted Numbered Routes
 - RD 167 UNIMPROVED/Numbered Routes
 - City Center
 - Corporate Limits
- CORPORATE LIMITS AS OF 2006**
STATE HIGHWAYS CORRECTED TO 2006

FRIEND - 76



FRIEND ONE YEAR AND SIX YEAR STREET PLAN

SHEET 1